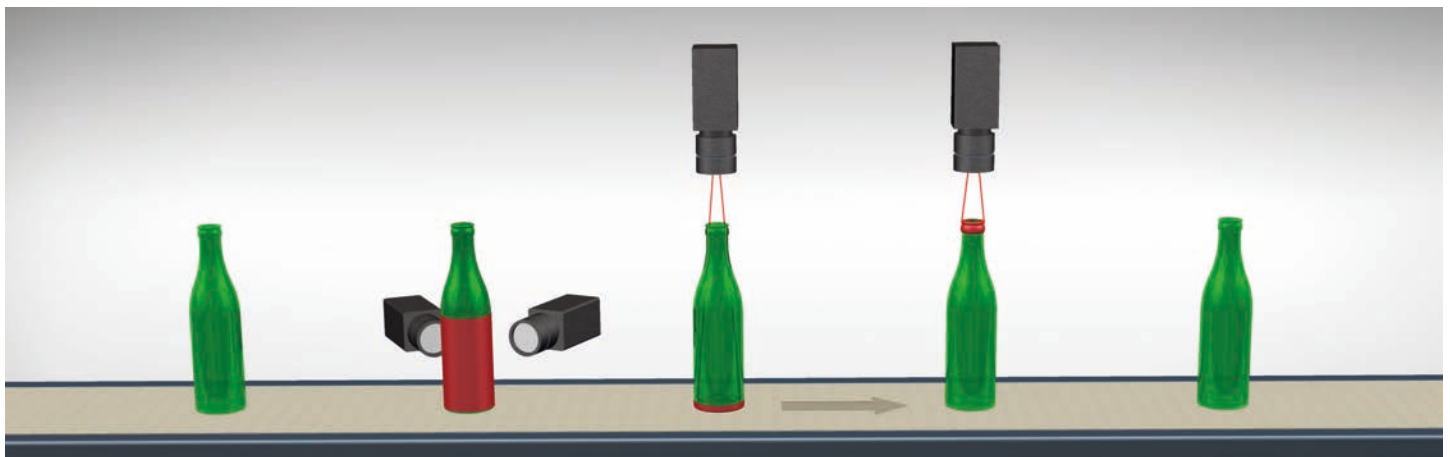


Bottle Inspection

UniscanBOTTLE

UniscanBOTTLE is a visual inspection system for high-speed checking of bottles and glasses prior to their filling. Typically it is applied in food industry (breweries, distilleries, spirits industry, drink production lines, etc.) as part of health and safety checks. The system verifies the bottle necks, bases, walls and at the same time scans each object from up to four angles to achieve maximum performance and quality control.



Operation principle of a bottling line - a) bottle wall inspection, b) bottle base checking, c) bottle neck checking

Suitable For

- » different bottle types, sizes and materials (glass, PET)
- » detection of defects, impurities and foreign objects on washing line outputs and filling line inputs
- » bottle quality during production

Features

- » detection of defects from 1mm²
- » suitable for lines with speeds up to 72,000 bottles/hour
- » powerful flash illumination synchronized with the presence of a bottle and the camera
- » sensitivity configuration for each inspection
- » configuration of minimum size of detected defects
- » configuration of different bottle typ detection
- » flexibility due to the modularity of the system
- » integration with higher levels of the production line
- » inspection result statistics export
- » result image data backup
- » user and user rights management
- » remote service and management
- » application localization

Detected Defects

- » impurities (e.g. fungi, scratches) on walls or the bottom
- » foreign objects (straws, shards, foils, bottle caps etc.)
- » missing pieces (broken or cracked bottles)
- » chipped, non-compact, dirty bottle neck
- » bottle shape and color
- » label or cap presence



Detected defects on a bottle neck (left) and inside a bottle (right)

Installations

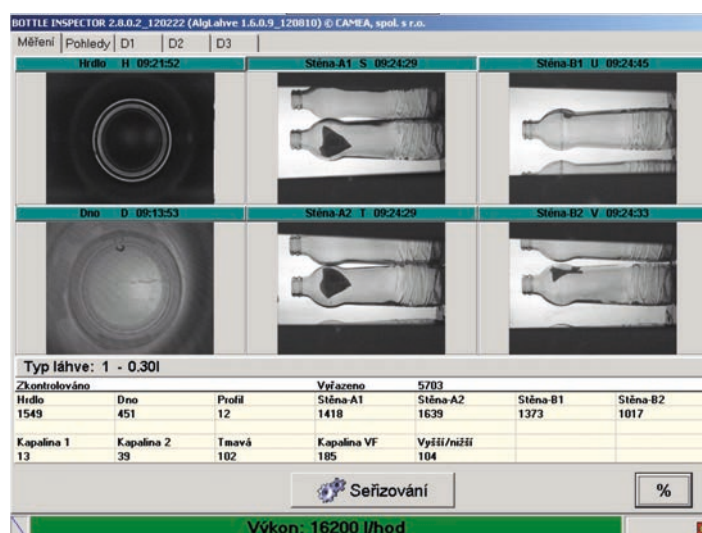
Litovel Brewery, PepsiCo CZ, Rychtář Brewery, Protivín Brewery, Korunní, Toma Teplice nad Metují, Samson Brewery, Trutnov Brewery, Jihlava Brewery Steiger - Vyhne (SK), Urpiner - Banská Bystrica (SK), Kirov (RU), Liepaja (LT), Jurajska (PL), Tervete (LT), Morshansk (RU), Piwniczanka (PL), APO Fruchsäfte (AT)



Bottling line equipped with a bottle inspection system



UniscanBOTTLE visual inspection system applied in industry



User interface

UniscanBOTTLE visual inspection system is a part of EXAN – a complex solution for bottling line inspection of bottle quality, manufactured by NATE Chotěboř, a. s. Detailed information can be found at www.nate.cz